



*Photo may include optional equipment.

HYUNDAI MATERIAL HANDLING *Environmentally - Friendly*

10/13BOP-7 AC



Head Office (Sales office)
First tower, 55, Bundang-ro, Bundang-gu, Seongnam-si, Gyeonggi-do, Korea

PLEASE CONTACT

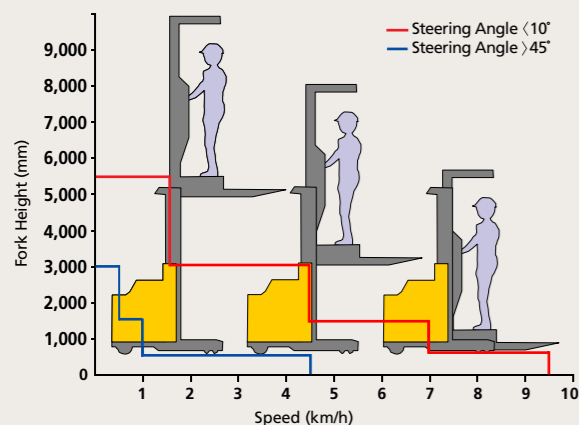
www.hyundai-ce.com

2018. 07. Rev. 6



Superior Power & Optimal Performance

Smooth running, efficiently and ergonomically designed, 10/13BOP-7 series are built to meet your needs.



Steering angle	Travel speed by platform height (km/h)				
	-600	-1,500	-3,000	-5,500	-9,200
S/ Angle < 10°	9.5	7.0	4.5	1.6	0
10° < s / Angle < 45°	9.5-4.5	7.0-1.0	4.5-0.5	1.6-0	0

Travel Speed Control by Platform Height

Limit travel speed by steering angle - 10°~45° : Linearly reduce the maximum speed
Travel banned height is set for safety - over : 5,500mm



Electromagnetic brake is mounted on the traction motor.

Brake System

Electro-magnetic brake applied for parking - On travel, automatically unlock brake (Negative type braking system by spring return force)



Minimum turning radius

Compact design suitable for narrow aisle operation guarantees work efficiency and maximum space utilization.



*Photo may include optional equipment.



Electric Power Steering(EPS)

EPS assures effortless steering allowing less fatigue to the operator. Machine performance and battery life are also enhanced.



Adjustable Pallet Clamp

Euro Pallet
(100~150mm Center Stringer width)
Wood Pallet
(44mm Center Stringer width)



Guide Roller

When the truck entering in the rack, the drive wheel position is laced at the center, the operation is possible to do picking and driving work safely. (option)



Automatic Center Position at Starting

When the key ON, prox switch detects the position of drive wheel, and the wheel turns to the center position automatically.

High Technology ZAPI Controller

The efficient, almost noiseless, 8Khz(high frequency) controller provides smooth quite operation and protection for low & high voltage, overheating and fault recording.

Energy Efficiency

H(High) mode : 100%
N(Normal) mode : 110%
E(Economic) mode : 120%



Drive Motor & Pump Motor

Efficient AC motor guarantees reliability and a optimized motor design provides for low noise levels. Temperature sensor ensure long motor life.



*Photo may include optional equipment.

Comfortable Operation

A design based on human engineering relieves fatigue and increases operator's efficiency.



Steering Wheel

A newly designed steering control coupled with our new Electric Power Steering control gives the operator exceptionally smooth and controlled steering for tight spaces.

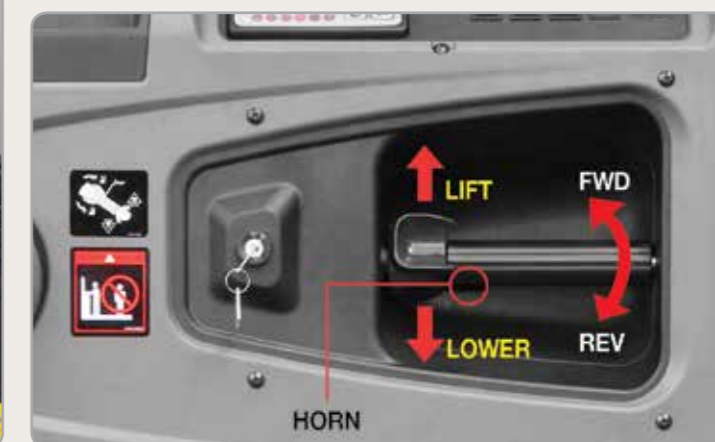


New High Visibility for Safe Operation

The operator is able to work with increased safety and accuracy due to a wider mast view.



Safety Belt & Side Bar



Multifunctional Control Lever

The control lever is designed ergonomically. The operator is able to control platform lift up and down, travel function and horn with one hand.



Self - diagnostic LCD Monitor

The LCD monitor has a back-light system to provide a clear view of the system's operation in all environments. The monitor provides information about operation error, system fault, battery level, hour meter plus other various functions.

Storage Box Space

Additional storage spaces are located inside the operating space for operator's convenience.



Strong Overhead Guard

The safety overhead guard meets EEC and ANSI regulations and protects the operator during hazardous work.



Dead man Switch



Convenience Devices

There are 3 devices for convenience.

- Operator room lamp
- Operator cooling fan
- Work lamp

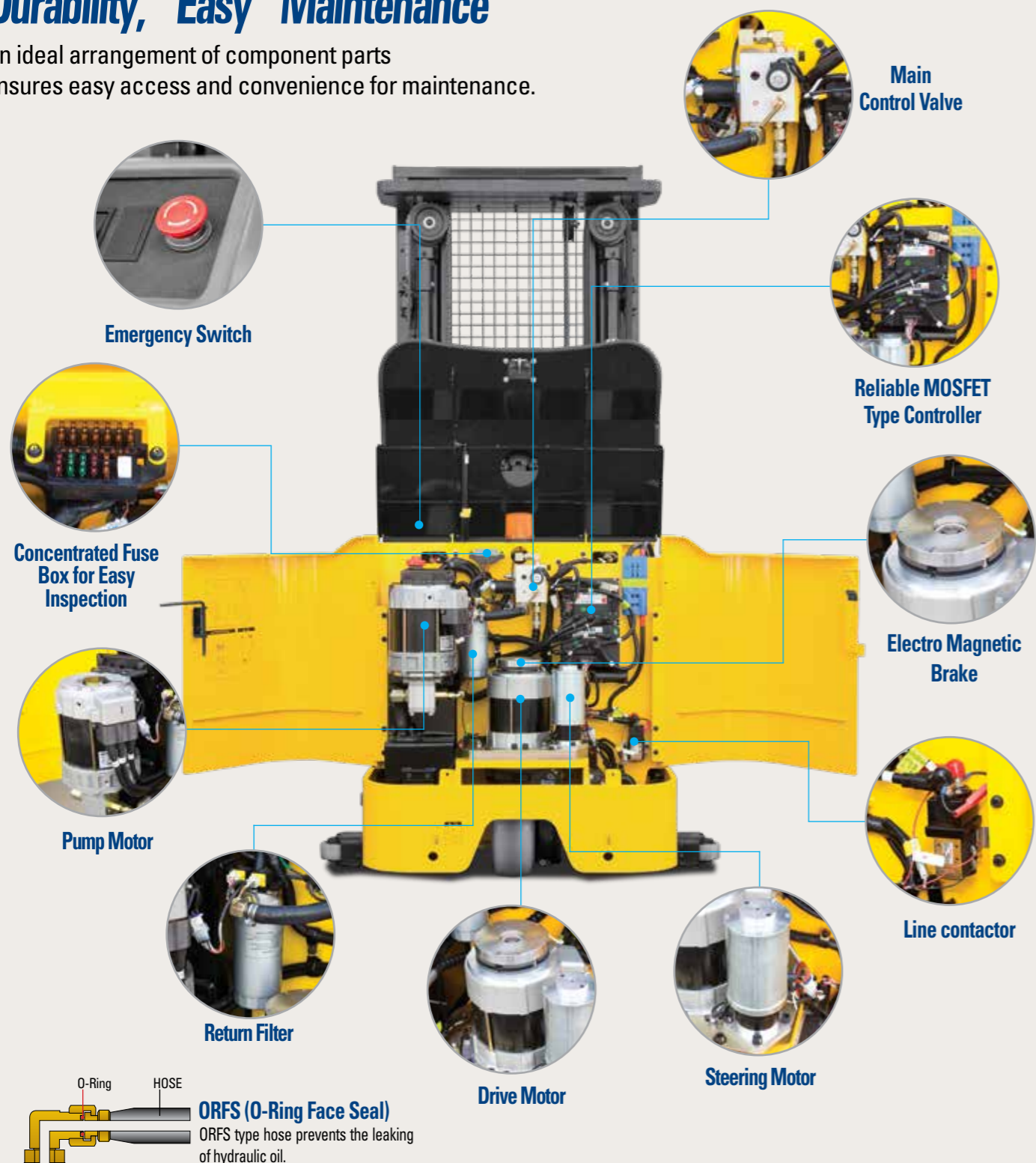


Pallet Clamp Pedal

It is easy clamp and release the pallet by pushing the pedal.

Durability, Easy Maintenance

An ideal arrangement of component parts ensures easy access and convenience for maintenance.



Option

- Fork(mm) : 900, 1050, 1350, 1500, 1600
- Guide Roller(Wide Frame) : 1226mm / 1,256(1,456)mm / 1,280(1,480)mm / 1,304(1,504)mm
- Pallet Clamp : Euro Pallert, Wood Pallet

- UL(E)
- Beacon lamp (Amber, Blue, Red)
- Battery : 10BOP-7(400AH, Compartment) / 13BOP-7(500AH, Compartment)

Mast Specification (10BOP-7)

Mast Type	Maximum Fork Height	Overall Height (Lowered)	Overall Height (Lifted)	Free lift Height	Load capacity w/o side shift	Truck Weight (Unloaded)
		With OHG	With OHG	With OHG	600mm LC	
		mm	mm	mm	kg	kg
2-STAGE LIMITED FREE LIFT	V325	3,275	2,220	5,470	0	2,761
	V355	3,575	2,375	5,770	0	2,786
	V415	4,175	2,680	6,370	0	2,837
	V475	4,775	2,985	6,970	0	2,888
	V535	5,375	3,285	7,570	0	2,989
3-STAGE FULL FREE LIFT	TF500	5,071	2,220	7,266	25	3,004
	TF530	5,355	2,375	7,550	180	3,039
	TF610	6,115	2,680	8,310	485	3,113
	TF685	6,879	2,985	9,074	790	3,243
	TF760	7,641	3,285	9,836	1,090	3,373
	TF815	8,175	3,515	10,370	1,320	3,428
	TF865	8,681	3,745	10,876	1,550	3,488
	TF930	9,321	4,025	11,516	1,830	3,606

Mast Specification (13BOP-7)

Mast Type	Maximum Fork Height	Overall Height (Lowered)	Overall Height (Lifted)	Free lift Height	Load capacity w/o side shift	Truck Weight (Unloaded)
		With OHG	With OHG	With OHG	600mm LC	
		mm	mm	mm	kg	kg
2-STAGE LIMITED FREE LIFT	V325	3,275	2,220	5,470	mm	2,902
	V355	3,575	2,375	5,770	0	2,928
	V415	4,175	2,680	6,370	0	2,978
	V475	4,775	2,985	6,970	0	3,029
	V535	5,375	3,285	7,570	0	3,130
3-STAGE FULL FREE LIFT	TF500	5,071	2,220	7,266	0	3,145
	TF530	5,355	2,375	7,550	25	3,180
	TF610	6,115	2,680	8,310	180	3,255
	TF685	6,879	2,985	9,074	485	3,384
	TF760	7,641	3,285	9,836	790	3,514
	TF815	8,175	3,515	10,370	1,090	3,569
	TF865	8,681	3,745	10,876	1,320	3,630
	TF930	9,321	4,025	11,516	1,550	3,748

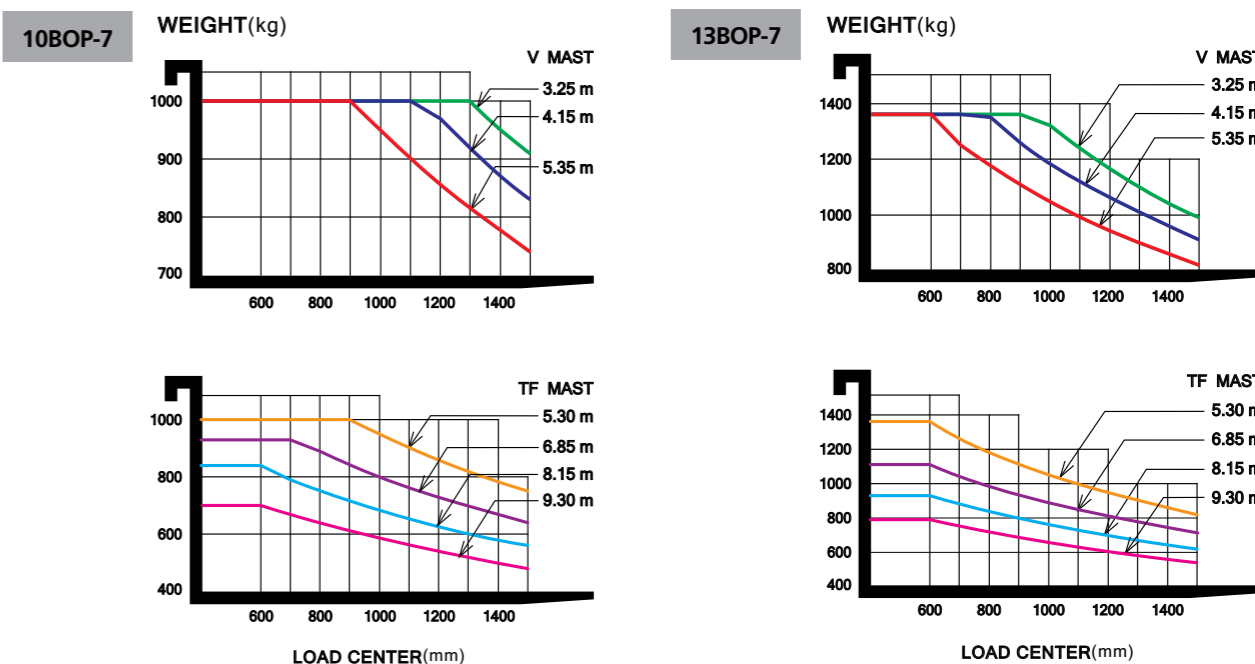
Mast Specification (10BOP-7) (Additional lift)

Mast Type	Maximum Fork Height (Additional lift)	Overall Height (Lowered)	Overall Height (Extended)		Free lift Height		Additional lift	Load capacity w/o side shift 600mm LC	Truck Weight (Unloaded)	
			With OHG	Without OHG	With OHG	Without OHG				
			mm	mm	mm	mm				
2-STAGE LIMITED FREE LIFT	V325	4,035	2220	5470	3805	0	0	760	900	2952
	V355	4,335	2375	5770	4105	0	0	760	900	2977
	V415	4,935	2680	6370	4705	0	0	760	900	3028
	V475	5,535	2985	6970	5305	0	0	760	900	3079
	V535	6,135	3285	7570	5905	0	0	760	900	3180
3-STAGE FULL FREE LIFT	TF500	5,831	2220	7266	5581	25	1710	760	900	3192
	TF530	6,115	2375	7550	5885	180	1845	760	900	3227
	TF610	6,875	2680	8310	6625	485	2170	760	750	3301
	TF685	7,639	2985	9074	7389	790	2475	760	560	3431
	TF760	8,401	3285	9836	8151	1,090	2775	760	480	3561
	TF815	8,935	3515	10370	8685	1,320	3005	760	420	3616
	TF865	9,441	3745	10876	9191	1,550	3235	760	350	3676
TF930	10,081	4025	11516	9831	1,830	3515	760	300	3794	

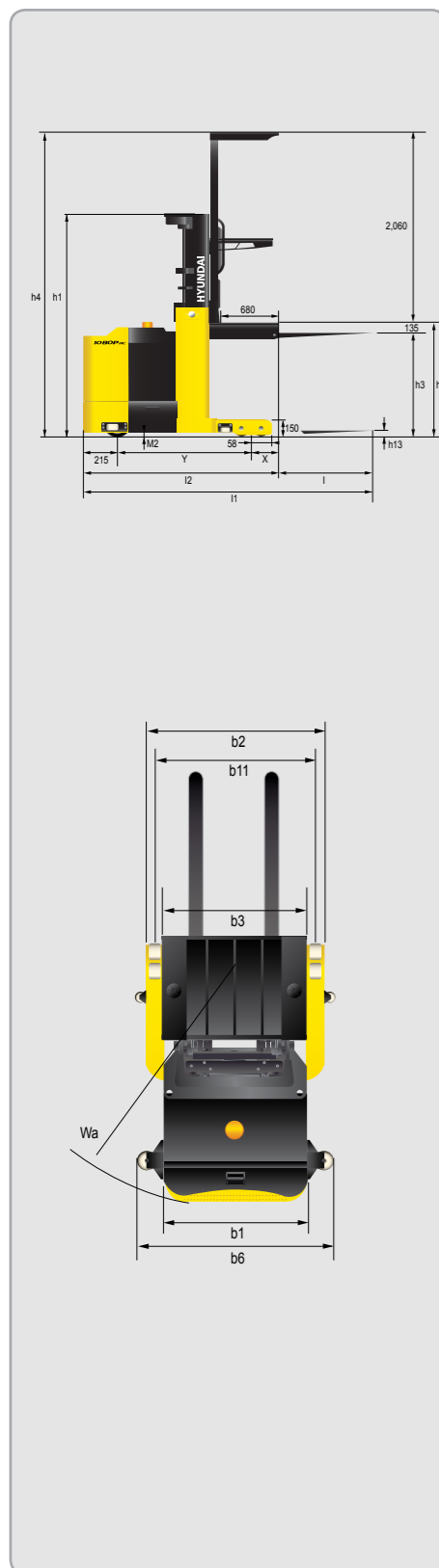
Mast Specification (13BOP-7) (Additional lift)

Mast Type	Maximum Fork Height (Additional lift)	Overall Height (Lowered)	Overall Height (Extended)		Free lift Height		Additional lift	Load capacity w/o side shift 600mm LC	Truck Weight (Unloaded)	
			With OHG	Without OHG	With OHG	Without OHG				
			mm	mm	mm	mm				
2-STAGE LIMITED FREE LIFT	V325	4035	2220	5470	3805	0	0	760	1000	3093
	V355	4335	2375	5770	4105	0	0	760	1000	3119
	V415	4935	2680	6370	4705	0	0	760	1000	3169
	V475	5535	2985	6970	5305	0	0	760	1000	3220
	V535	6135	3285	7570	5905	0	0	760	1000	3321
3-STAGE FULL FREE LIFT	TF500	5831	2220	7266	5581	25	1710	760	1000	3333
	TF530	6115	2375	7550	5885	180	1845	760	1000	3368
	TF610	6875	2680	8310	6625	485	2170	760	825	3443
	TF685	7639	2985	9074	7389	790	2475	760	650	3572
	TF760	8401	3285	9836	8151	1090	2775	760	550	3702
	TF815	8935	3515	10370	8685	1320	3005	760	500	3757
	TF865	9441	3745	10876	9191	1550	3235	760	450	3818
TF930	10081	4025	11516	9831	1830	3515	760	350	3936	

Load Capacity



Dimension



Specification

■ Identification				
1.1	Manufacturer	HYUNDAI	HYUNDAI	
1.2	Manufacturer's model designation	10BOP-7	13BOP-7	
1.3	Power supply(electric,diesel,petrol,gas>manual)	electric	electric	
1.4	Type of operation(hand,pedestrian,standing,seated,order-picker)	order picker	order picker	
1.5	Load capacity / rated load	Q (t)	1.0	1.36
1.6	Load center distance	c (mm)	600	600
1.8	Load distance, center of drive axle(Loadwheel) to fork	x (mm)	235	235
1.9	Wheelbase	y (mm)	1,430	1,480
■ Weights				
2.1	Service weight (Inc. battery)	kg	2,760	2,902
2.2	Axle loadings laden	drive end / load end	958 / 2,802	849 / 3,413
2.3	Axle loadings unladen	drive end / load end	1,549 / 1,211	1,625 / 1,276
■ Wheels,Chassis				
3.1	Tyres		Polyurethane	Polyurethane
3.2	Tyre size	drive end	305 x 140	305 x 140
3.3	Tyre size	load end	152 x 100	152 x 100
3.5	Wheels, numbers (x=driven wheels) drive / load		1 x / 4	1 x / 4
3.6	Track width (front)	drive end	b10 (mm)	0
3.7	Track width (rear)	load end	b11 (mm)	909 (1,109)
■ Basic Dimensions				
4.2	Colosed mast height	h1 (mm)	2,220	2,220
4.4	Lift height	h3 (mm)	3,275	3,275
4.5	Height, mast raised (console / overhead guard)	h4 (mm)	5,470	5,470
4.7	Height to top of overhead guard	h6 (mm)	2,260	2,260
4.8	Platform height (h13+135mm)	h7 (mm)	200	200
4.14	Picking height (h12+1,600mm)	h28 (mm)	5,010	5,010
4.15	Height lowered (Fork Height)	h13 (mm)	65	65
4.19	Overall length without load	l1 (mm)	3,080	3,130
4.20	Length to front face of forks	l2 (mm)	1,880	1,930
4.21	Overall width of chassis	b1 / b2 (mm)	1,020 / 1,050(1,250)	1,020 / 1,050(1,250)
4.22	Fork dimensions	s/e/l (mm)	40 x 100 x 1,200	40 x 100 x 1,200
4.25	Overall fork width	b5 (mm)	588 / 650 / 712	588 / 650 / 712
4.26	Platform width	b3 (mm)	1,020 (1,250)	1,020 (1,250)
4.27	Guide roller width	b6 (mm)	see option chart	see option chart
4.32	Foor clearance, centre of wheelbase 2	m2 (mm)	51	51
4.33	Working aisle width, with 800 x 1,200 crosswise	Ast (mm)	3,342	3,391
4.34	Working aisle width, with 1,200 x 800 lengthwise	Ast (mm)	3,459	3,507
4.35	Outer turning radius	Wa (mm)	1,769	1,818
■ Performance Data				
5.1	Speed, laden / unladen	km/h	9.5 / 10	9.5 / 10
5.2	Lift speed, laden / unladen	mm/s	250 / 350	240 / 350
5.3	Lowering speed, laden / unladen	mm/s	380 / 380	380 / 380
5.9	Acceleration time (over 10m)	sec	7	7
5.10	Brakes		electric release	electric release
■ E-Motor				
6.1	Dirve motor rating S2 = 60min	kW	5.2	5.2
6.2	Lift motor rating at S2 = 15%	kW	10.6	10.6
6.4	Battery voltage, capacity K5	V/Ah	48 / 300	48 / 400
6.5	Battery weight 5% (dependent on manufacturer)	kg	600	730
■ Other Details				
8.1	Drive control		AC	AC
8.4	Noise peak at operator ears	dB (A)	-	-

MEMO